

## Notification to Fishermen

### Nord Stream 2 Project

01.10.2018

#### 1. Purpose of this notification

Nord Stream 2 AG hereby submits a notification for the activities to be performed for the Nord Stream 2 Project in October 2018.

During this period, mattress installation, rock placement and pipelay are planned in the Finnish Exclusive Economic Zone (EEZ), as well as rock placement and potentially mattress installation in the Swedish EEZ.

Nord Stream 2 AG reminds that the construction vessels have limited manoeuvrability while performing their work and that safety exclusion zones are therefore established around the vessels carrying out the Nord Stream 2 activities.

#### 2. Vessel information

##### Planned Vessels

*Oceanic* – Call sign: 9HA4426





Nordnes – Call sign: PHOG





### Supporting vessels to Solitaire

Pipe Carriers:

Solvik Supplier, C6ZW5

Havila Crusader, LCAH3

Symphony Performer, PBRD

Supply Ship:

Havila Fortress; C6NX9

Survey:

Olympic Triton; LADM3

Intervention tug:

Esvagt Connector; OVOK2

### 3. Duration and locations of activities

The **mattress installation** with *Oceanic* will continue in the Finnish EEZ, with possible works also in Sweden.

As to **rock placement** activities, *Bravenes* will be in the Swedish EEZ in the beginning of October, following which she will leave the Baltic Sea. Upcoming rock placement work will be carried out with the vessel *Nordnes* that is sailing from Norway and is planned to enter the Swedish EEZ and perform works during the first week of October. *Nordnes* will then transit to Finland to carry out rock placement

works in that jurisdiction. *Nordnes* is planned to come back to the Swedish EEZ later in October or November.

**Pipelay** with *Solitaire* will continue throughout October in the Finnish EEZ, with pipe supply to be carried out from Kotka. The laying direction is from west to east – towards Russia.

To sum up, in Finland, Nord Stream 2 works will be carried out by *Nordnes*, *Oceanic* and *Solitaire*, together with the latter's supporting vessels; *Baravenes*, *Nordnes* and likely *Oceanic* will perform activities in the Swedish EEZ.

The intervention tug *Esvagt Connector* will be stationed in the shallow water area Off Kalbådagrund TSS during pipelay operations. The tug will be on standby to assist Contractor and third party vessels by towing and pushing as necessary.

Please note that these details are subject to change for operational reasons.



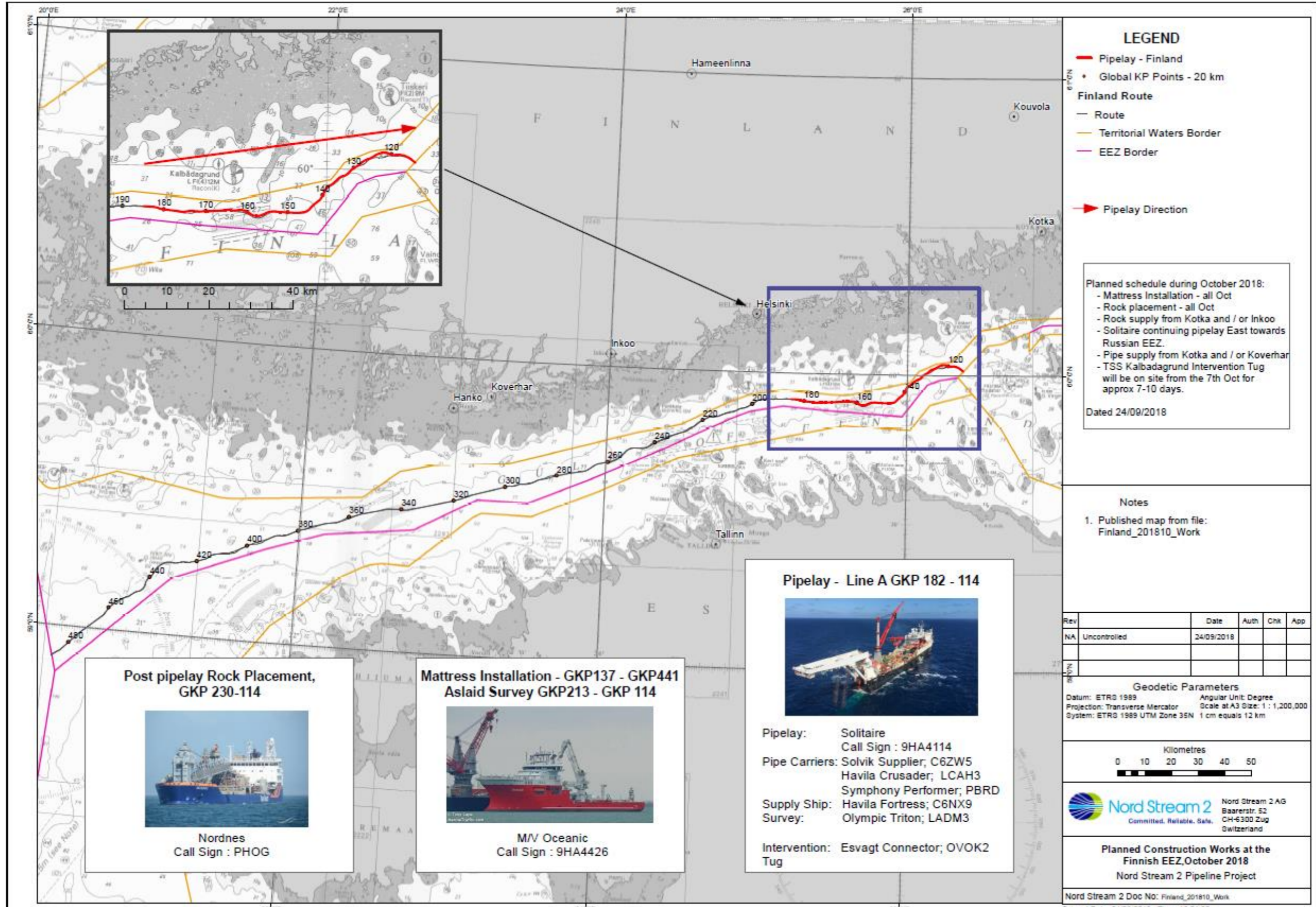


Figure 1 Nord Stream 2 activities in October in the Finnish EEZ



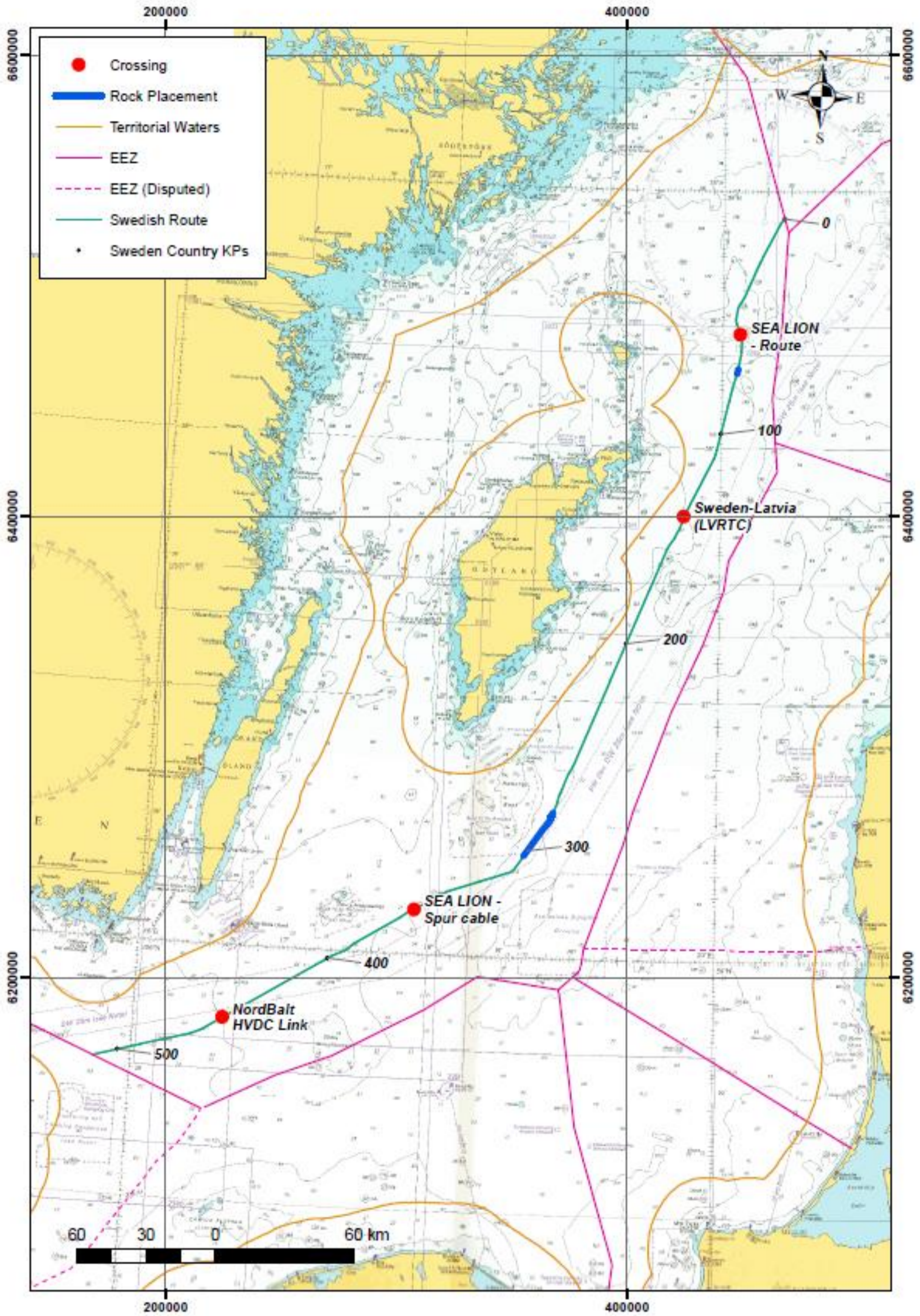


Figure 2 Nord Stream 2 activities in October in the Swedish EEZ

#### 4. Exclusion Zones

Nord Stream 2 AG would like to highlight that a safety zone of 1 nautical mile is established around Solitaire and 500 meters around the other vessels performing activities for Nord Stream 2 Project.

Information about the works to be performed in the upcoming weeks, can also be found on the Notices to Mariners web-page, available at:

<https://www.liikennevirasto.fi/ammattimerenkulku/merikartat/merikarttojen-paivytyspalvelu/tiedonantoja-merenkulkijoille-vuodesta-2005/2018#.W7HcLiB9jb0><sup>1</sup>

and

<http://www.sjofartsverket.se/sv/Sjofart/Sjokort/Ufs---Underrattelser-for-sjofarande-/Sok-i-databasen11/>

In addition to this information regarding October activities, further notification(s) will follow in due course with regards to Nord Stream 2 construction activities in the coming months.

---

<sup>1</sup> If you have issues with accessing this link, please copy and paste it into browser.